



# Integrated Environmental Solutions

General Incorporated Foundation  
**EMATEC**

Environmental research (measurement and analysis), inspection and evaluation, environmental monitoring, assessment, consulting, and support to the grant business, etc.

## Features



- Environmental Management & Technology Center (a.k.a.:EMATEC) was established in 1972 as a comprehensive institute for environment technology by Japanese Ministry of Economy-Trade and Industry, Osaka Prefecture Government, Osaka City Government, Kansai Economic Federation and Osaka Chamber of Commerce.
- We provide consulting in the overall technology and experience gained over a period of 43 years.

## Research / Measurement / Analysis



## Overview

- EMATEC performs appropriate precision management and performs the next business.
- ◆ Environmental research, the measurement, analysis and inspection, evaluation of facilities
- ◆ Environmental Impact Assessment & Environmental monitoring
- ◆ Plan drafting of the local green plan
- ◆ Joint suggestion, support of the JCM business
- ◆ As public utilities, EMATEC perform the holding of various seminars, the publication of the environmental information magazine, the lecture to a trainee and training, lecturer dispatch.

General Incorporated Foundation Environmental Management & Technology Center  
 Planning & Administration Department Research & Planning Division  
 9-10, Kawaguchi 2-chome, Nishi-ku, Osaka 550-0021, JAPAN

URL: <http://www.ematec.or.jp>

E-mail [kansai\\_ksuishin@ematec.or.jp](mailto:kansai_ksuishin@ematec.or.jp)

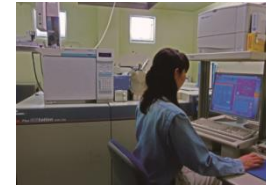
TEL: +81-6-583-3262 FAX: +81-6-583-3274



## Performance /specifications of technology / product

### Owned Equipment

- ◆ Gas chromatography-mass spectrometer
- ◆ Liquid chromatograph mass spectrometer
- ◆ Ion chromatograph, etc.



### Usage examples / result

#### Domestic Record

- ◆ Soil pollution investigation (we are designated research institutes based on the law of Japan) we investigate soil pollution as a designated research institute
- ◆ Environmental monitoring associated with development business and the construction
- ◆ Suggestion of the river construction technique to reduce environmental influence
- ◆ Environmental Impact Assessment such as an industrial area, a large-scale retail store, the waste disposal and treatment facility
- ◆ Investigation into water environment (river, groundwater, sea area) and atmosphere environment, the measurement, analysis
- ◆ Factory effluent, investigation about the road effluent gas, the measurement, analysis
- ◆ Work environmental measurement , Examination for drinking water etc.



#### Overseas Record

- ◆ Lecture to a member of JICA foreigner training  
7 countries 22 people in 2014、 1 countries 9 people in 2011、 7 countries 8 people in 2010
- ◆ We dispatched the staff for the “technology and operations management” instruction of the water infrastructure (Indonesia 2012, Vietnam 2013)
- ◆ Seminar for disseminating Japanese wastewater treatment technology in East Asia (Target country : Indonesia and Vietnam 2012, Vietnam and Myanmar 2013)
- ◆ “The Joint Crediting Mechanism Project” Planning Study [JCM-PS] (Indonesia 2015)
- ◆ JCM Model Projects. “Indonesia/Energy Saving in Industrial Wastewater Treatment System for Rubber Industry “ (Indonesia 2016-18)
- ◆ Asian water environment improvement model business. “Project for efficient industrial wastewater treatment at industrial park in Indonesia by using aerator “ (Indonesia 2017-19)



#### Assumed Case

- ◆ Consulting for environmental management of industrial park  
(Air quality, Water quality, Noise, Vibration, Bad smell, Harmful chemical substance etc.)
- ◆ Consulting for waste water treatment technology. Consulting for soil contamination and groundwater pollution
- ◆ Joint project with the overseas local university, research institute
- ◆ Consulting about the JCM project