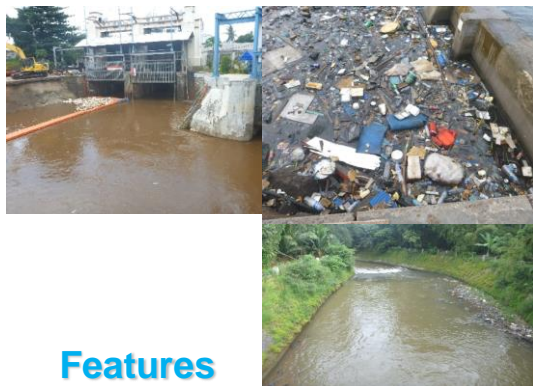
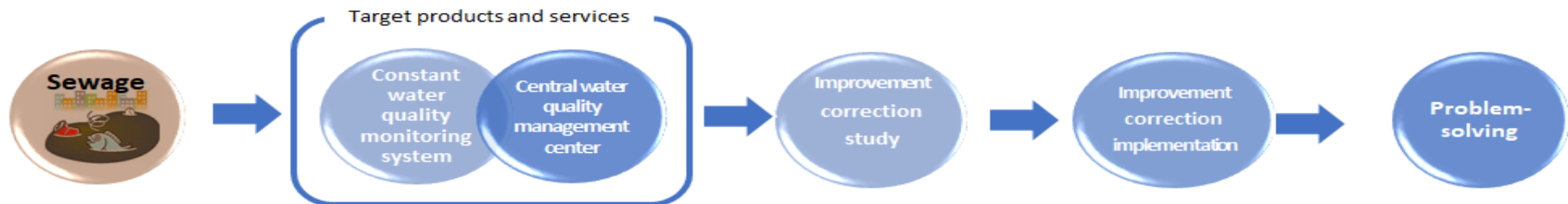




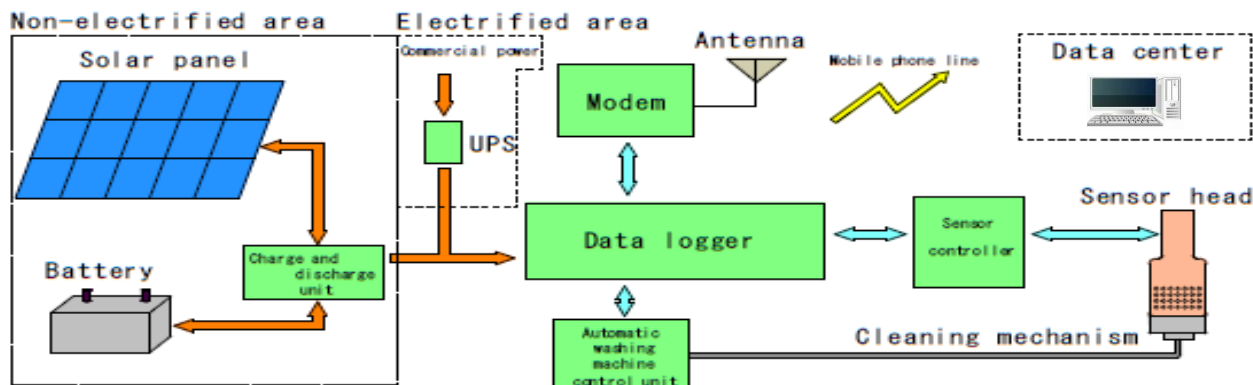
# Constant water quality monitoring system

TANAHASHI ELECTRIC MACHINERY CO., LTD.

Suggestions of steady-state data collection device for water quality improvement that can handle even in a poor environment.



## Features



In areas where water pollution is serious, the sensor often does not function due to river contamination, but an automatic sensor cleaning function has been added to enable maintenance-free water quality measurement for a certain period of time.

As mentioned above, at sites without electricity, we have also built a system using solar power and batteries. We propose the construction of a water quality measurement system in all environments.

## Overview

Centralized management of measurement data at one location using the IOT system utilizing the Internet. The purpose is to monitor water quality in the target area, survey the actual conditions, organize water quality improvement measures, and identify problems.



 **TANAHASHI ELECTRIC MACHINERY CO., LTD.**

7-44,2CHOME GAMOU JOTO-KU,OSAKA,536-0016 JAPAN

URL; <https://www.m-osaka.com/en/exhibitors/243/>  
 E-mail [osaka@tanahashidenki.co.jp](mailto:osaka@tanahashidenki.co.jp)  
 TEL: +81-6-6939-1621 FAX: +81-6-6939-1623

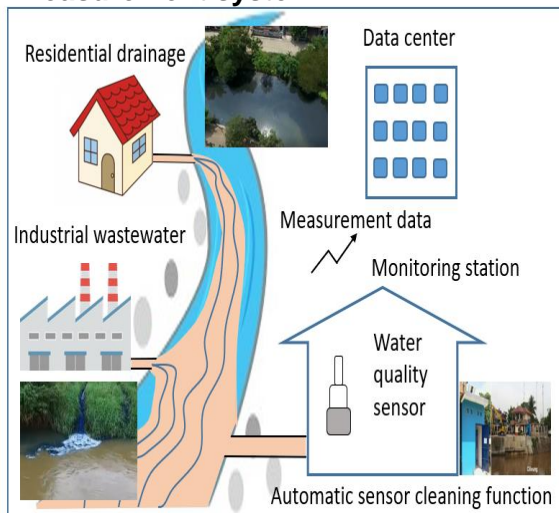


Team E-Kansai

ISO9001-ISO14001 (:2015)

## Performance /specifications of technology / product

### ◆Image of the entire water quality measurement system



### ◆Sensor automatic cleaning 30sec/time Washing



As of September 2020, sensors automatic cleaning mechanism is patent pending in Indonesia.

We plan to acquire patents in Japan and China as well.



## Usage examples / result

### ◆River water quality centralized monitoring system construction surveys and experiments. (Indonesia Jakarta West Java area)

