

At the forefront water environment design

Planning, design and supervision services related to civil engineering and building projects

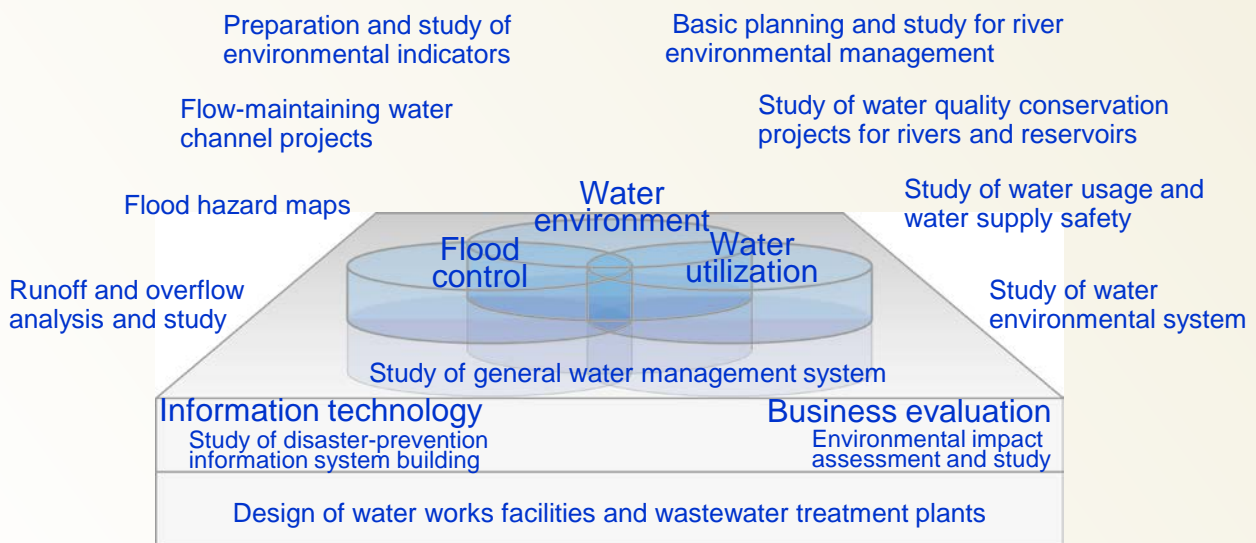
Features

Water is an important resource for maintaining our lives and societies, and is indispensable for all living things on earth. We believe that it is our mission to take care of this important resource and to pass down our various water-related environments to future generations in good condition. NSC provides a range of consulting services for maintaining water environments in good condition, including rivers, lakes, marshes, dams and reservoirs.

Investigation and analysis	Investigation and analysis related to hydrology, hydraulics, water quality, and ecosystems.
Planning	Flood control plans, water use plans, water quality protection plans, river channel plans, and general water environment preservation plans.
Facility design	Basic design and detailed design of river control facilities (revetments, dikes, dams, purification facilities, etc.) ,water works facilities and wastewater treatment plants.
Environmental impact assessment	Environmental impact assessments for various types of projects.
Environmental business evaluation	Environmental-economic assessments and cost-benefit analyses.

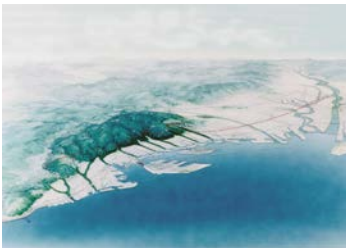
Overview (Technical principles, actions, etc.)

We intend to continue as an organization that contributes to society through comprehensive consulting related to environmental information, especially in the area of water environments, by mastering the latest technologies, independently developing new technologies, and interacting with the community.



Introductory Track Records and Effects

Planning and study for the Hanshin Canal Plan



Study of water quality preservation in Yabakei Dam Reservoir

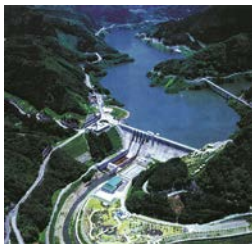
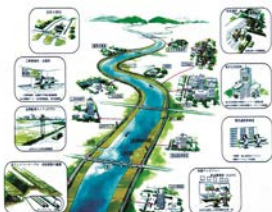


Illustration of building a river space fiber optic communication network



Detailed urban planning for resort development in Ho Quan Son in Vietnam



Detailed urban planning for the Lach Tray River Area of Haiphong, Vietnam



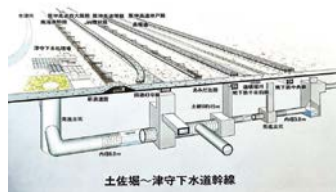
General water management survey of Lake Biwa



Planning on water quality preservation in Nagaragawa Estuary Barrage



Design for Tosabori-Tsumori Drainage Tunnel



Planning for water Environmental management of Lake Ogawara



Flow-maintaining water channel project



Design for Tsumori sewage pump station



Planning for water Environmental management of Suwa Lake



Preparation of river flood hazard maps



Design for Tsumori sewage treatment plant



Planning and design for Taipei Channel



Resort development planning for Wetland in Panjin in China



Conceptual planning for Donghai Mingzhu Island in China



Overseas

**NIKKEN SEKKEI
CIVIL ENGINEERING LTD**

<http://www.nikken-civil.co.jp/>
E-mail odgyomu@nikken.co.jp
4-6-2 Koraibashi, Chuo-ku, Osaka, 5418528 Japan
TEL +81-6-6229-6399 FAX +81-6-6229-3381