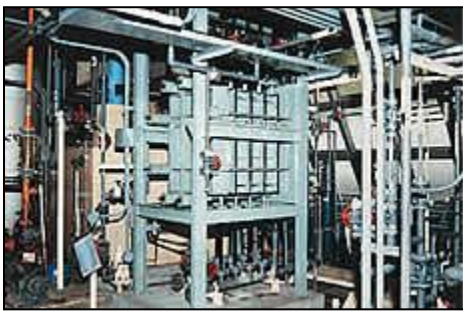


SIM SYSTEM

Sodium Hypochlorite Generation Unit

Features

- Sodium Hypochlorite produced by the electrolysis of brine on site.
- Running cost is economical.
- Operation is simple.



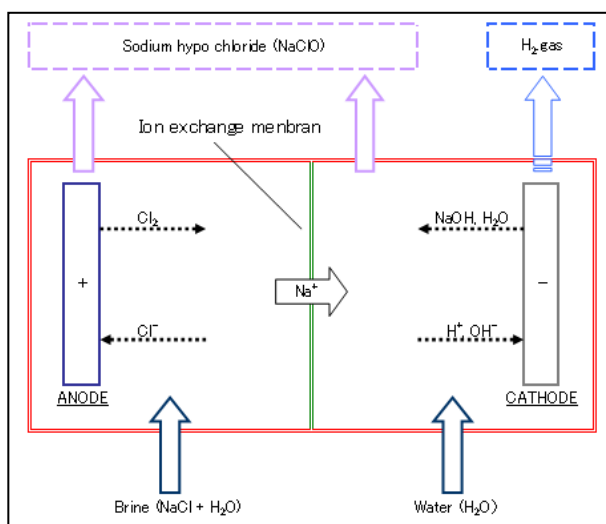
Plant type



Package type

Overview (Technical principles, actions, etc.)

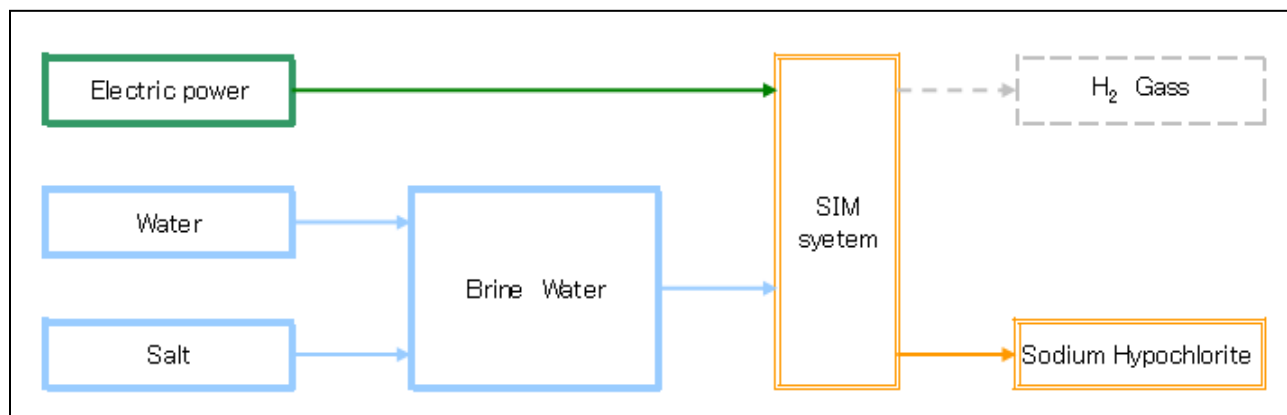
Sodium Hypochlorite is used for the sterilization of city water and sewage instead of liquid chlorine.



- ① Anode reaction ;
 $2\text{NaCl} \rightarrow \text{Cl}_2 + 2\text{Na}^+$
- ② Cathode reaction ;
 $2\text{Na}^+ + 2\text{H}_2\text{O} \rightarrow 2\text{NaOH} + \text{H}_2$
- ③ Synthesis
 $2\text{NaOH} + \text{Cl}_2 \rightarrow \text{NaClO} + \text{NaCl} + \text{H}_2\text{O}$

- Use for**
- Water sterilize
 - Deodorizing, Decolorizing
 - Prevent adhesion of creature in the sea

Flow chart



Introductory Track Record

| SL.NO. | PRESENT OWNER | LOCATION | YEAR UNIT COMMISSIONED | UNIT SIZE/ CAPACITY [kg/h-cl ₂] | UNIT MODEL NO. |
|--------|---|-------------|------------------------|--|----------------|
| 1 | SIMITOMO RUBBER INDUSTRIES.LTD. /Kobe Factory | HYOGO/JAPAN | 1978 | 2 | SIM-20 |
| 2 | SHIGENOBU-CHO WATER SERVICE SECTION MINAMIYOSHII#2 WATER SOURCE | EHIME/JAPAN | 1983 | 0.04 | SIM-04 |
| 3 | MINAMIUWA WATER SUPPLY AUTHORITY IKEBE WATER SOURCE | EHIME/JAPAN | 1985 | 0.06 | SIM-06 |
| 4 | OCHISHOTO WATER SUPPLY AUTHORITY DAI WATER TREATMENT PLANT | EHIME/JAPAN | 1989 | 1 | SIM-10 |
| 5 | NANYO WATER SUPPLY AUTHORITY MISAKI WATER TREATMENT PLANT | EHIME/JAPAN | 1991 | 1 | SIM-10 |
| 6 | NANYO WATER SUPPLY AUTHORITY YOSIDA WATER TREATMENT PLANT | EHIME/JAPAN | 1999 | 1 | SIM-10 |
| 7 | TOKYO METROPOLITAN GOVERNMENT ASAGIRI WATER TREATMENT PLANT | TOKYO/JAPAN | 2004 | 200 | SIM- II -120 |

Inquiries

DAISO ENGINEERING CO.,LTD.
OVERSEAS PROJECT DEPT.

<http://www.daiso-eng.co.jp/>

E-mail sales.dept@daiso-eng.co.jp

12-18, Awaza 1-chome, Nishi-ku, Osaka 550-0011, Japan
TEL +81-6-6110-1632 FAX +81-6-6110-1633